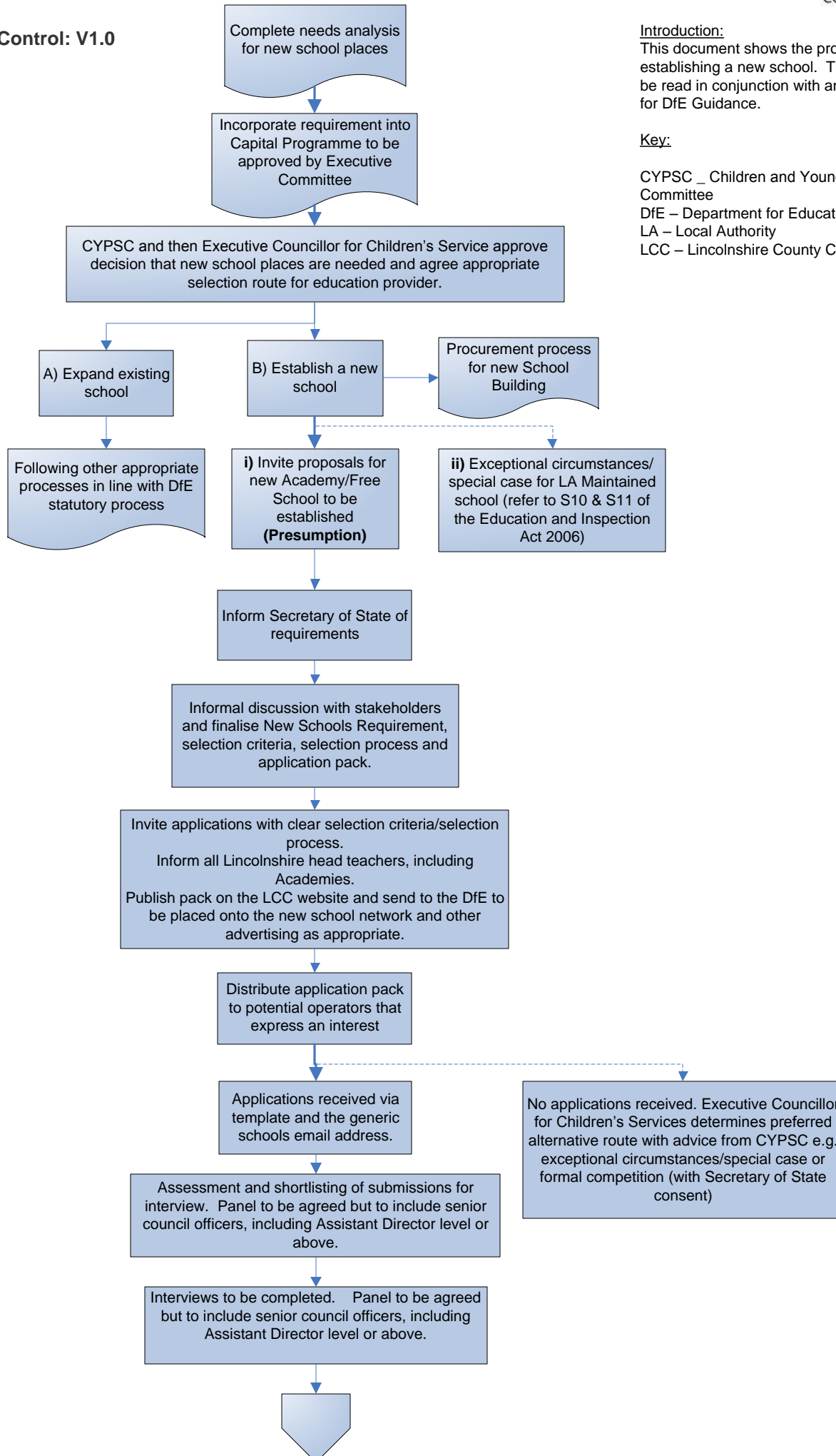


Version Control: V1.0



Introduction:

This document shows the process map for establishing a new school. This process should be read in conjunction with and is not a substitute for DfE Guidance.

Key:

- CYPSC _ Children and Young People's Scrutiny Committee
- DfE – Department for Education
- LA – Local Authority
- LCC – Lincolnshire County Council

Children's Services
Establishing a New School
Operator Procedure

Page 2 of 2

Version Control: V1.0

